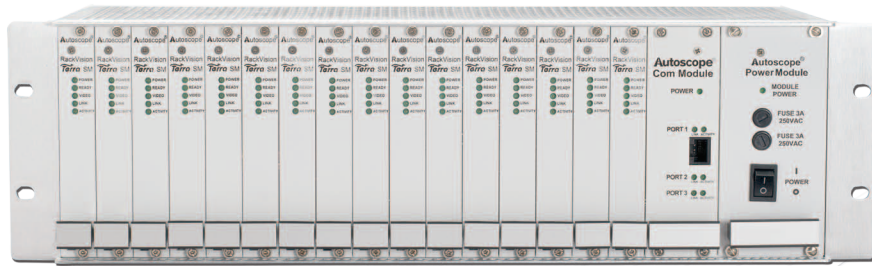


# Autoscope® RackVision™ Terra™ System 16



The Autoscope® RackVision™ Terra™ System 16 is a multi-camera video detection solution for tunnels, bridges and highways. The system delivers field proven incident detection and traffic data collection to promote safe and efficient traffic flow on roadways worldwide.

With innovative Terra Technology you will appreciate the processing power, web browser communications, streaming digital video and ease of setup and use. EasyLink™ broadband connectivity provides simple connection to your traffic system communications network.

From pedestrian detection in tunnels to slow moving vehicle detection on the roadway, the Autoscope RackVision Terra System 16 is a cost effective and comprehensive solution for your transportation projects.

## APPLICATIONS

- > Traffic incident management
  - Highways
  - Tunnels
  - Bridges
- > Traffic data collection and analysis
- > Work zone safety and traffic control
- > Traveler information systems
- > Journey time (travel time)
- > Remote video surveillance

## FEATURES

- > Vehicle detection, traffic data collection and incident detection
- > Up to sixteen (16) modular video input channels (PAL, CCIR, NTSC or RS170)
- > Dual-core processor for advanced image processing
- > MPEG-4 digital streaming video output or analog output
- > EasyLink broadband communications
- > IP addressable
- > View video from remote locations using Internet browser
- > Fail-safe outputs

## BENEFITS

- > Cost-effective solution for traffic management
- > Field-proven accuracy and reliability
- > Easy to install and configure
- > Flexible design meets a variety of detection objectives
- > Superior value and performance compared to other detector systems



## SPECIFICATIONS

### Power

- > 85 to 264 VAC, 220W maximum
- > Consumption, current
  - @110 VAC: 1.45A
  - @230 VAC: 0.69A
  - @24 VDC: 6.65A

### Video

- > Input
  - PAL, CCIR, NTSC or RS170
  - One composite 75Ω 1 Vpp, BNC connector on backplane for each RackVision Terra System Module (SM) card
- > Output
  - PAL or NTSC
  - Two RJ-45 connectors on backplane for 10/100/1000 Mb/sec Ethernet connectivity
  - One (1Vpp), BNC connector for each Terra module on backplane
  - MPEG-4 digital streaming video via EasyLink
  - Analog

### Communications

- > RJ-45 connector on front of Com module for 10/100 Mb/sec Ethernet connectivity

### Detector I/O

- > Outputs
  - Eight (8) per video channel (open collector, selectable active low or high) via backplane
- > Inputs
  - Four (4) per video channel via backplane

### Environmental

- > -34° C to +74° C (-29° F to +165° F)
- > 0 to 95% relative humidity

### Dimensions and Weight

- > H x W x L
  - 133 mm x 483 mm x 217 mm
  - (5.25 in x 19.00 in x 8.56 in)
- > 6.4 kg (14.0 lbs) max

### Warranty

- > Two-year warranty
- > Extended warranty package available

### Regulatory

- > CE EN 55022, EN 61000-6-1, EN 60950

## SETUP AND OPERATION

The Autoscope RackVision Terra System 16 is easy to install, setup and customize to meet your requirements.

- > You can assign detector outputs to provide vehicle presence and alarms to traffic control and monitoring equipment.

Simple mouse and keyboard commands create detection zones for:

- Tunnels
- Highways
- Bridges

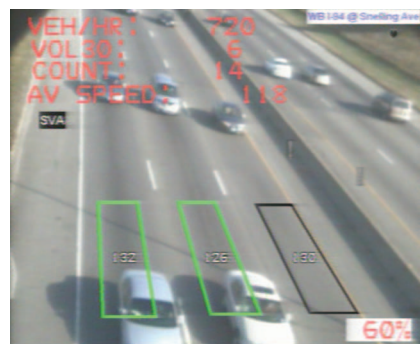
- > Real-time or stored traffic data includes:

- Volume
- Occupancy
- Speed
- Classification

- > You can assign incident alarms to discrete detector outputs or send to a traffic management center via a communications network. Incidents detected include:

- Stopped vehicles
- Wrong way vehicles
- Slow moving vehicles
- Pedestrian
- Debris
- Smoke/fire

- > You can quickly integrate traffic data into your own application using the optional Autoscope Software Developer's Kit (SDK).



Contacts

### Image Sensing Systems, Inc. Headquarters

500 Spruce Tree Centre  
1600 University Avenue West  
St. Paul, Minnesota 55104-3825 USA

Phone +1.651.603.7700  
Fax +1.651.305.6402  
stpaul@imagesensing.com  
imagesensing.com

### Image Sensing Systems Europe Limited

City Park  
Swiftfields  
Welwyn Garden City  
Hertfordshire  
AL7 1LY United Kingdom

Phone +44.1707.378870  
Fax +44.1707.378875  
enquiries@imagesensingeu.com  
imagesensing.eu

### Flow Traffic Limited

Suite 01, 18th Floor, Queen's Place  
74 Queen's Road Central  
Hong Kong

Phone +852.2827.1123  
Fax +852.2827.0056  
hongkong@flowtraffic.com  
flowtraffic.com.cn



[autoscope.com](http://autoscope.com)

*Due to ISS' continuous efforts to develop the products that are most responsive to our customers needs, the above specifications are subject to change. To verify the current information please visit the Autoscope web site.*

